



BREDON  
SCHOOL



## Return to School Autumn 2020

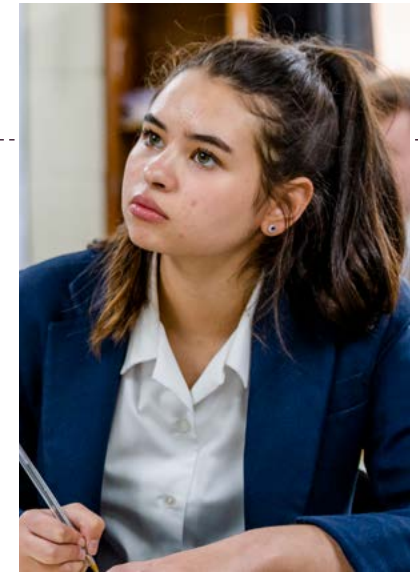
Bredon School has initiated various workstreams to consider and adjust where appropriate our school environment for the Autumn Term, to adhere to the [latest government advice](#)



# Return to School

Autumn 2020

Workstream	Adjustments Made
<b>Classroom/ Teaching</b>	<ul style="list-style-type: none"><li>➤ Forward Facing Desks</li><li>➤ Face-masks<ul style="list-style-type: none"><li>- Classrooms - not mandatory</li><li>- Communal spaces - only if local lock-downs occur</li><li>- Adhere to latest government guidance</li></ul></li><li>➤ One-way systems/staggered exit from classrooms</li><li>➤ Supervised &amp; controlled access into and no queuing outside of classrooms</li><li>➤ Teaching staff will have access face shields/ face masks</li><li>➤ Flexi-use of largest classrooms (within departments) to best fit pupil numbers</li><li>➤ Enhanced cleaning between lessons</li><li>➤ Open windows to encourage airflow</li><li>➤ Individual stationary</li><li>➤ Own water bottles to be brought into school</li><li>➤ Cleaning of shared equipment between uses</li><li>➤ Chromebooks to be kept within departments and “Bring Your Own Device” is encouraged if possible/ preferred by pupils</li><li>➤ Bubbles to continue to operate in Junior School</li><li>➤ Senior School pupils will be bubbled by year group or section where appropriate</li><li>➤ Full uniform to be worn from the start of term</li><li>➤ Own aprons/ overalls are to be worn for Art, Catering &amp; DT</li></ul>



# Return to School

Autumn 2020

Workstream	Adjustments Made
<b>Lunch &amp; Break</b>	<ul style="list-style-type: none"><li>&gt; Staggered break times and dedicated snack stations per year group</li><li>&gt; Staggered Lunchtimes (see catering section)</li></ul>
Workstream	Adjustments Made
<b>Catering</b>	<ul style="list-style-type: none"><li>&gt; Adjusted meal times to accommodate pupils and staff</li><li>&gt; Hand sanitiser stations on entry</li><li>&gt; Use of face shields of catering staff that are serving food</li><li>&gt; Rotational use of three dining rooms, normal seating arrangements will apply</li><li>&gt; Dining rooms cleaned between uses</li><li>&gt; One-way systems</li><li>&gt; Hot &amp; cold “Grab and Go” menu options to reduce queuing</li><li>&gt; External seating (socially distanced picnic benches and marquee)</li></ul>
Workstream	Adjustments Made
<b>Transport</b>	<ul style="list-style-type: none"><li>&gt; Mandatory use of Face coverings/ masks on whilst on buses</li><li>&gt; Mandatory use of pupils own hand sanitiser upon entry to bus (also hand sanitiser to be provided on transport)</li><li>&gt; Enhanced cleaning regime before and after use</li><li>&gt; External providers/ internal risk assessments</li></ul>



# Return to School

Autumn 2020

## Workstream

### Boarding

## Adjustments Made

- > Operate as a family, both houses together
- > New easy-clean flooring and new decoration
- > Restricted access to boarding areas, to include parents (pick up drop off times, areas)
- > Investment in laundry room to increase capacity
- > Investment in onsite activities to limit external exposure to COVID-19
- > Onsite tuck shop stocking essentials for boarders (more details to follow)
- > UK Government policy used as guiding principle for quarantine rules and air bridges
- > Boarding induction week for all new and returning boarders, including daily COVID appel to reiterate “new normals” in place
- > No access for day pupils into boarding houses
- > Please refer to the Planning Ahead - Boarding Provision for September 2020 for further details
- > Compliance with BSA Covid-Safe Charter - to include, but not exclusively, travel arrangements, location of parents/transport when dropping off, and exclusivity of boarding accommodation for the “boarding bubble”



# Return to School

Autumn 2020

Workstream	Adjustments Made
<b>Sport/ Activities</b>	<ul style="list-style-type: none"><li>&gt; No fixtures until October half term (when reviewed)</li><li>&gt; Changing rooms cleaned daily / reduced use</li><li>&gt; Regular cleaning before use, or with 21 day protection against COVID-19</li><li>&gt; Onsite activities only</li><li>&gt; Sport to be conducted in line with latest Return to Sport Protocol, including Rugby (RFU), Hockey (England Hockey), Netball (England Netball), Football (FA)</li><li>&gt; Years 10,11,12 and 13 are to wear sports kit in on a Wednesday</li><li>&gt; Year 7,8 and 9 are to wear sports kit in on a Thursday</li></ul>



Workstream	Adjustments Made
<b>Farm</b>	<ul style="list-style-type: none"><li>&gt; Pupils to bring own wellies &amp; overalls</li><li>&gt; Restricted/ monitored access to farm</li><li>&gt; Hand washing &amp; hand sanitising stations within farm</li><li>&gt; Areas where staff/ pupils go are disinfected regularly by Farm Manager</li><li>&gt; No sharing of equipment where possible, cleaned between use where not</li></ul>

# Return to School

Autumn 2020

---

Workstream	Adjustments Made
<b>Pastoral Support</b>	<ul style="list-style-type: none"><li>&gt; Clear expectations stated by Headmaster and Deputy Head (Pastoral &amp; Boarding) in first assemblies, including strict adherence to “no contact” rule for all year groups</li><li>&gt; Tutors will follow up first assembly with reassuring email to all parents and guardians after first day, stating content covered in these assemblies</li><li>&gt; Intro of Chit system for Health &amp; Wellbeing Centre</li></ul>

Workstream	Adjustments Made
<b>Health &amp; Wellbeing (Medical) Centre</b>	<ul style="list-style-type: none"><li>&gt; Relocation to first floor of SMART building</li><li>&gt; To incorporate 7 self-contained sick rooms</li><li>&gt; One-way system</li><li>&gt; Large &amp; airy consultation room</li><li>&gt; Updated procedures for COVID symptoms &amp; isolation of pupils</li><li>&gt; New school nurse, Carey Allen, starts with Bredon for September</li><li>&gt; Updated protocol for Test &amp; Trace</li><li>&gt; In event of COVID symptoms, parents will be required to collect pupils where possible</li></ul>



# Return to School

Autumn 2020

Workstream	Adjustments Made
<b>Cleaning Regime</b>	<ul style="list-style-type: none"><li>&gt; Fog spraying (back-packs) for rapid disinfectant of common areas (product kills COVID-19 within 1 minute)</li><li>&gt; Zono Product used will give a minimum of 21 days protection against COVID-19 on all high use touch points (e.g. handles, toilets, chairs, desks, etc.)</li><li>&gt; Classrooms “fogged” during lunchtimes</li><li>&gt; Classroom specific sprayers/ cloths to be used by all staff</li><li>&gt; Additional cleaning hours incorporated</li></ul>

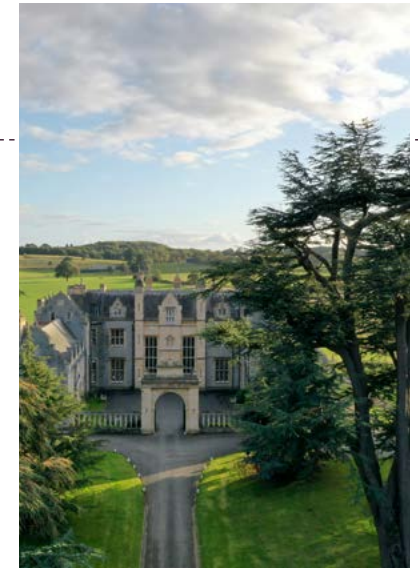
Workstream	Adjustments Made
<b>Hygiene</b>	<ul style="list-style-type: none"><li>&gt; Additional external sinks for handwashing</li><li>&gt; Hand sanitiser stations located around site</li><li>&gt; “Catch it, Bin it, Kill it” approach</li><li>&gt; Increased bins on site</li><li>&gt; Prominently positioned signage, outlining new etiquette</li><li>&gt; Education of pupils &amp; staff upon return to site</li></ul>



# Return to School

Autumn 2020

Workstream	Adjustments Made
<b>General School / Site controls</b>	<ul style="list-style-type: none"><li>➤ Signage</li><li>➤ Visitor/ site access controlled with Test &amp; Trace log &amp; Risk Assessments</li><li>➤ Regular review of latest government advice</li><li>➤ Updated risk assessments to consider impact of COVID-19</li><li>➤ Large gatherings (e.g. entire school assemblies) postponed and replaced with socially distant alternatives</li><li>➤ COVID training of staff through inset days</li><li>➤ Education of pupils on first day</li><li>➤ Stock of PPE as spares (face shields, face masks and aprons)</li><li>➤ Stock pile of hand sanitiser &amp; cleaning equipment</li></ul>





# We look forward to seeing you soon



## Bredon School



Pull Court, Bushley  
Tewkesbury  
Gloucestershire GL20 6AH

T: **01684 293156**

E: **admissions@bredonschool.co.uk**

[www.bredonschool.org](http://www.bredonschool.org)

A part of the Cavendish Education Group